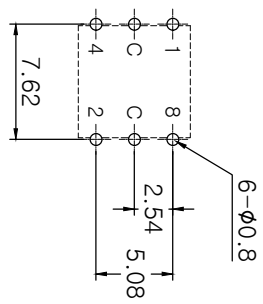


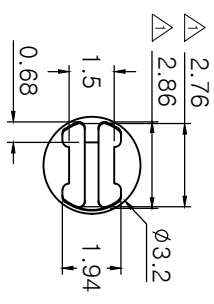
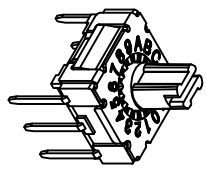
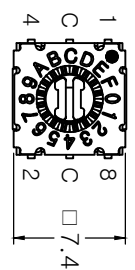
MRK.	DATE	REVISION	SIGN
△	21.09.28.	Rotor Dimension Up Side $\phi 2.7 \rightarrow \phi 2.76$ /Down Side $\phi 2.76 \rightarrow \phi 2.86$	

SPECIFICATION

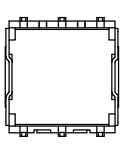
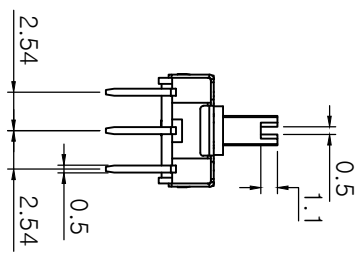
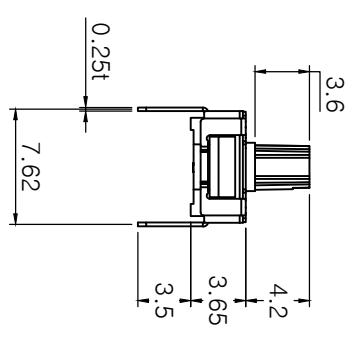
1. Rating : 100mA, DC 42V (Switching)
400mA, DC 42V (None-Switching)
2. Contact Resistance : 80m Ω Max
3. Insulation Resistance : 100M Ω Min at DC 250V
4. Operating Force : 120 \pm 30gf Max
5. Life cycle : 25,000 steps
6. Sealing : IP67 (Dust & Water proof)
7. Packing : 70pcs Tube



P.C.B DIMENSION (Top View)



ACTUATOR
SCALE : 4/1



16 Positions	Real Code				
	C	1	2	4	8
0	●				0
1	●	●			1
2	●		●		2
3	●			●	3
4	●				4
5	●				5
6	●		●		6
7	●			●	7
8	●				8
9	●				9
10	●				A
11	●		●		B
12	●			●	C
13	●				D
14	●		●		E
15	●			●	F

DRAW/DESIGNED	CHECKED	APPROVED	UNIT	G.TOL	TITLE	MODEL NO.	REV.
J.S YANG	W.J LEE	K.I LEE	mm	± 0.3	ROTARY DIP SWITCH	MSKR-16	REV.
2022-01-10	2022-01-10	2022-01-10		SCALE		MSKR-16-04	04
				2:1			
				SIZE			
				A4			

BONSDA 深圳市子庚科技有限公司